

## The sea



### Information:

- **Seas** and **rivers** are bodies of water that are essential in sustaining civilizations.
- A **sea** is smaller than an **ocean** which may be partly or fully enclosed by land.
- A **river** is a naturally flowing body of water which comes from higher areas such as mountains.
- **Seas** have salt water while **rivers** have fresh water.

**Sea Creatures**

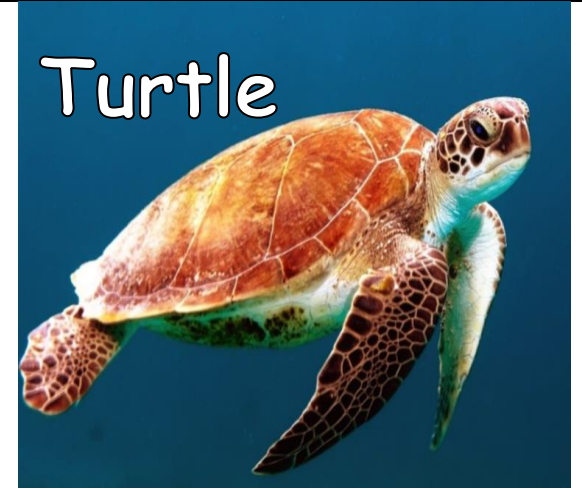
Crab



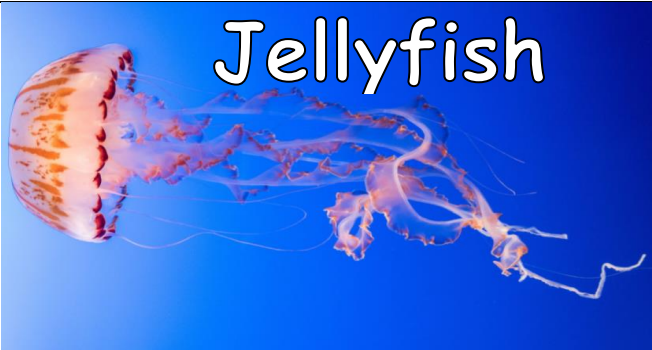
Clown Fish



Turtle



Jellyfish



Seahorse



Stingray





## The Jungle



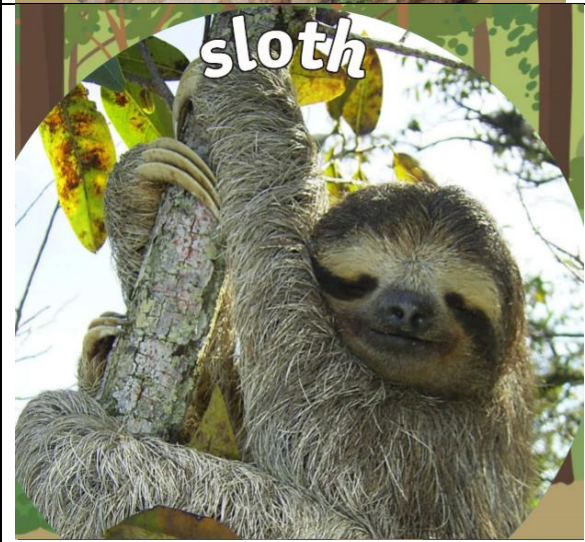
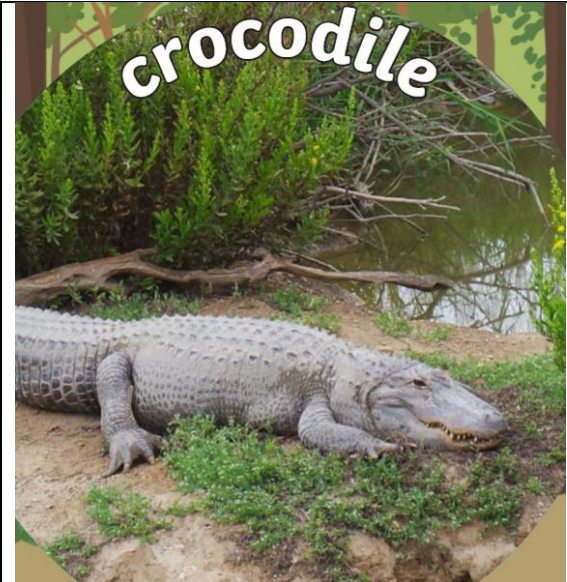
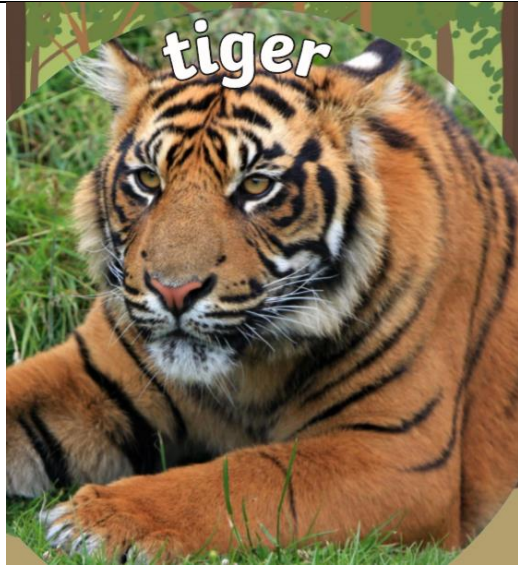
### Information:

- The main difference between **Jungle** and **Rainforest** is that the **Jungle** is an impassable dense forest (typically tropical) and **Rainforest** is a type of forest with high rainfall.
- A **Jungle** is land covered with dense vegetation dominated by trees.



Limetree Habitat Sort

**Jungle Animals**



## The Farm



### Information: What does a farm worker do?

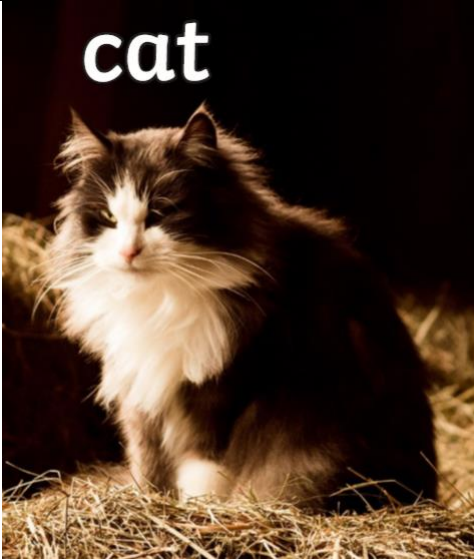
- Working with animals - such as feeding, cleaning (mucking out), caring for sick or new-born livestock and using milking machines for dairy work
- Ploughing fields, sowing seeds, spreading fertiliser, crop spraying and harvesting
- Operating tractors, combine harvesters and other farm vehicles
- Maintenance of farm buildings
- Laying and trimming hedges
- Digging and maintaining ditches
- Putting up and mending fences



Limetree Habitat Sort

**Farm Animals**

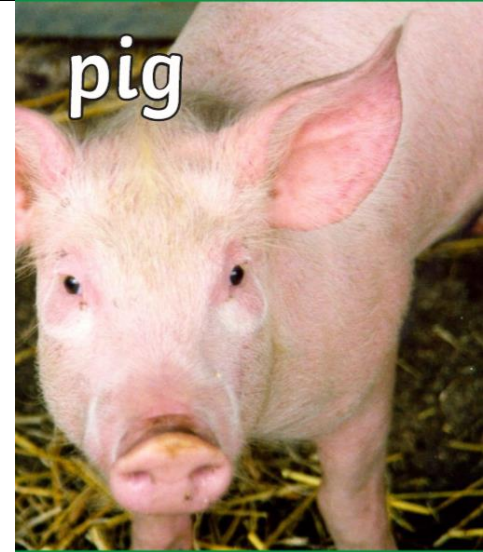
**cat**



**hen**



**pig**



**sheep**



**dog**



**horse**

