

Individual Activity Lesson Plan

Date: Wednesday 3rd June 2020

Activity Title: Waterlily Pond

Learning Intention: To create a simple representation of a painting.

Activity Overview: recreate Monet's Waterlily Pond painting.

Links to EYFS: Expressive arts & design:

- Creates simple representation of events, people, and objects
- Chooses particular colours to use for a purpose.

Equipment:

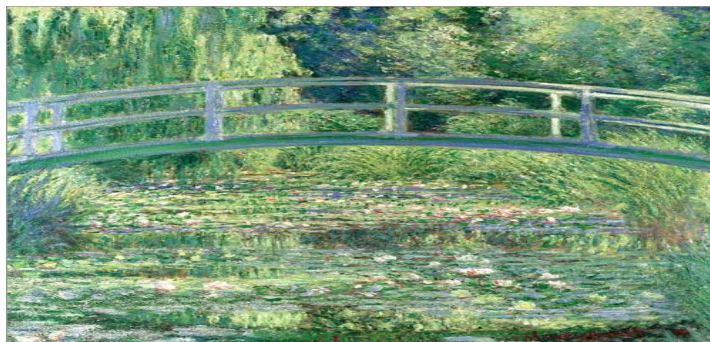
- A sheet of white A4 Or A5 card
- Masking tape
- Poster paints (a selection of rainbow colours)
- A large paper plate or paint palette.
- Wet wipes

Key vocabulary: Recreate, bridge arch, curve, paint colour, mix, and blend.

ACTIVITY IMPLEMENTATION (including key questions)

Introduction:

- Show your child an Image of Monet's Water Lily Pond painting. (below)
- Ask him/her to describe what they see. Encourage him/her to comment on the colours.
- Explain to your child that it was painted by an artist called Claude Monet. You may want to share some background on the artist.



Main Activity:

- Explain to your child that he/she will do a finger painting activity to recreate the picture painting.
- Gather the resources listed above.
- Use the document 'Step by Step – Monet's Waterlily Pond'.

Review:

- Invite your child to look at his/her painting
- What do you like about your painting?
- If you were going to paint the picture again, is there anything you would do differently?

Additional ways to support your child:

Encourage your child to talk about the creative process. Talk about how the colours are changing. Remember the learning is in the process of creating and not the end product.

Extension:

Challenge your child to make a photo frame for his/her painting. You could use recycled cardboard or large lolly sticks.



Individual Activity Lesson Plan

